

2022 Demographic Study Summary

Preston Smith
Principal Owner
Business Information Services, LLC



Our credentials

Why we can give an opinion and recommendations

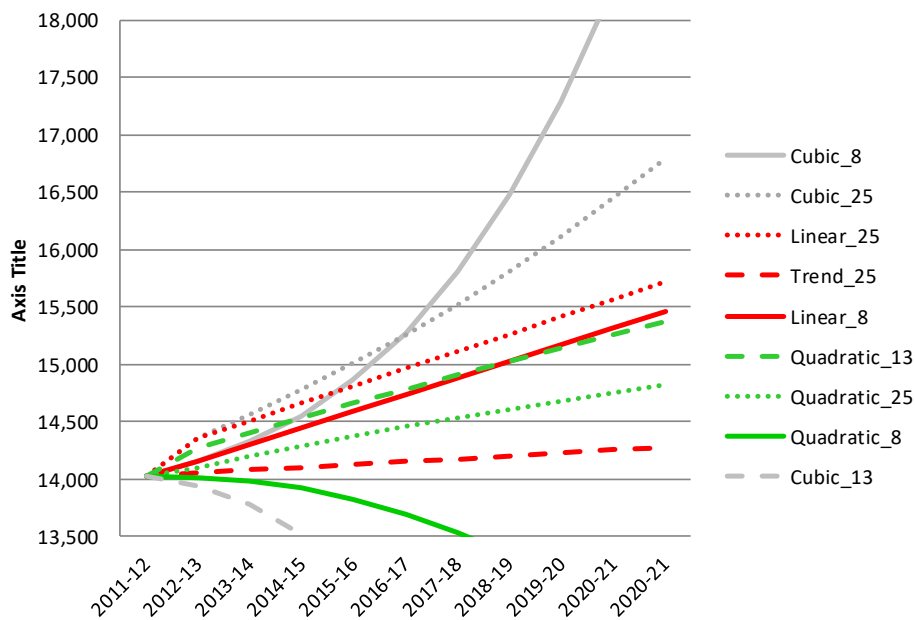
- Completed more than 200 studies and school district projects in 14 states since 2004.
 - Master's in Public Administration and Statistics
 - Head of our enrollment projection team:
Ph.d at Oklahoma State University.



How our projections are done

- Gather 25 years of data—housing permits, births, enrollment by grade, economic data, and then run multiple statistical models.
- The goal is to develop a model that most closely fits the pattern of the district's enrollment trends.

Model comparisons



Variability is the Norm

We did two previous studies of the Raytown District enrollment. The misses in 2017 were large—more than 10 times our usual variance. An update in 2018 was closer. We mentioned in our last report to you in 2017 that “variability would be the norm.”

The average percent variance is between 0.0% and -0.6% for all projects from 2016-2019.

Year Projection Made	Project	2017-18 Low-Range	2017-18 Mid-Range	2017-18 High-Range	Actual Enrollment 2017-2018	Variance	Percent	2018-19 Low-Range	2018-19 Mid-Range	2018-19 High-Range	Actual Enrollment 2018-2019	Variance	Percent	2019-20 Low-Range	2019-20 Mid-Range	2019-20 High-Range	Actual Enrollment 2019-2020	Variance	Percent		
2016-17	North Kansas City Schools	19,660	19,735	19,808	19,717	18	0.1%	19,711	19,862	20,009	20,097	88	0.4%	19,762	19,900	20,212	20,435	223	1.1%		
2016-17	Broken Arrow	18,186	18,345	18,499	17,956	-230	-1.3%	18,393	18,635	18,871	17,964	-429	-2.3%	18,602	18,930	19,250	18,331	-271	-1.5%		
2016-17	Columbia Public Schools	17,484	17,534	17,583	17,725	142	0.8%	17,553	17,653	17,751	17,914	163	0.9%	17,622	17,773	17,921	18,283	362	2.0%		
2016-17	Wentzville School District	16,473	16,533	16,591	16,373	-100	-0.6%	16,975	17,099	17,219	16,798	-177	-1.1%	17,492	17,684	17,871	17,327	-165	-1.0%		
2016-17	Parkway Schools							17,356	17,424	17,490	17,626	136	0.8%	17,183	17,319	17,450	17,526	76	0.4%		
2016-17	Blue Springs Schools	14,538	14,580	14,621	14,491	-47	-0.3%	14,567	14,651	14,734	14,510	-57	-0.4%	14,595	14,723	14,848	14,628	33	0.2%		
2016-17	Liberty School District							12,413	12,511	12,610	12,505	-6	0.0%	12,495	12,661	12,826	12,559	64	0.5%		
2016-17	Mehlville School District	10,113	10,171	10,225	10,138	-33	-0.3%	9,962	10,075	10,184	10,022	-53	-0.5%	9,813	9,981	10,142	9,963	-18	-0.2%		
2016-17	Lamar County Schools	9,865	9,901	9,935	9,812	-53	-0.5%	9,895	9,967	10,037	9,895	1	0.0%	9,926	10,034	10,140	10,010	-24	-0.2%		
2016-17	Republic Schools	4,736	4,781	4,825	4,790	9	0.2%	4,745	4,814	4,880	4,839	25	0.5%	4,755	4,846	4,936	4,902	-34	-0.7%		
2016-17	Willard School District	4,486	4,503	4,520	4,523	3	0.1%	4,495	4,529	4,563	4,488	-7	-0.2%	4,504	4,556	4,607	4,555	-1	0.0%		
2016-17	Meramec Valley	3,042	3,069	3,095	3,084	-11	-0.4%	3,007	3,047	3,086	2,995	-12	-0.4%	2,972	3,025	3,076	2,910	-62	-2.1%		
2016-17	Smithville School District							2,604	2,614	2,624	2,596	-8	-0.3%	2,602	2,628	2,644	2,648	4	0.2%		
2016-17	Clayton School District	2,116	2,127	2,138	2,181	43	2.0%	2,130	2,152	2,174	2,152	0	0.0%	2,144	2,177	2,210	2,119	-25	-1.2%		
2016-17	Orchard Farm	1,862	1,891	1,918	1,890	-1	-0.1%	1,904	1,949	1,991	1,927	-22	-1.1%	1,932	1,993	2,052	1,944	12	0.6%		
2017-18	North Kansas City Schools							19,759	19,835	19,909	20,097	188	0.9%	19,801	19,954	20,102	20,435	333	1.7%		
2017-18	Norman Public Schools							15,034	15,092	15,147	15,205	58	0.4%	15,079	15,194	15,306	15,387	81	0.5%		
2017-18	Blue Springs Schools							14,476	14,534	14,589	14,510	-24	-0.2%	14,462	14,577	14,688	14,628	-60	-0.4%		
2017-18	Independence Schools							14,346	14,418	14,480	13,180	-1,166	-8.1%	14,323	14,467	14,586	14,155	-168	-1.2%		
2017-18	Owasso	9,622	9,723	9,822	9,730	7	0.1%	9,741	9,877	10,011	9,629	-112	-1.1%	9,861	10,034	10,204	9,782	-79	-0.8%		
2017-18	Lamar County Schools							9,877	9,856	9,890	9,895	5	0.1%	9,873	9,893	9,960	10,010	50	0.5%		
2017-18	Raytown School District							8,705	8,750	8,792	8,425	-281	-3.2%	8,680	8,768	8,852	8,228	-452	-5.5%		
2017-18	Decatur, Illinois							7,944	7,988	8,029	8,139	110	1.4%	7,852	7,939	8,022	7,701	-151	-2.0%		
2017-18	Grain Valley Schools							4,382	4,401	4,420	4,349	-33	-0.8%	4,424	4,463	4,501	4,403	-21	-0.5%		
2018-19	OK City													37,077	37,258	37,430	35,897	-1,180	-3.3%		
2018-19	North Kansas City Schools													20,271	20,363	20,451	20,435	-16	-0.1%		
2018-19	Broken Arrow													18,000	18,086	18,169	18,331	162	0.9%		
2018-19	Blue Springs Schools													14,473	14,532	14,588	14,628	40	0.3%		
2018-19	St. Joseph School District													10,734	10,794	10,851	10,731	-3	0.0%		
2018-19	Lamar County Schools													9,906	9,944	9,981	10,010	29	0.3%		
2018-19	Raytown School District													8,270	8,399	8,425	8,228	-42	-0.5%		
2018-19	Joplin Public Schools													7,258	7,288	7,318	7,631	313	4.1%		
2018-19	Bixby Public Schools													6,608	6,639	6,670	6,476	-132	-2.0%		
2018-19	Nixa Public Schools													6,167	6,190	6,212	6,210	-2	0.0%		
2018-19	Hickman Mills													5,737	5,771	5,804	5,103	-634	-12.4%		
2018-19	Jackson, MO													5,171	5,190	5,209	5,166	-5	-0.1%		
2018-19	Belton													4,241	4,267	4,292	4,386	94	2.1%		
2018-19	Festus School District													3,062	3,077	3,092	3,099	7	0.2%		
2018-19	Meramec Valley School District													2,940	2,954	2,967	2,910	-30	-1.0%		
2018-19	Marshfield													2,925	2,940	2,955	2,945	5	0.2%		
2018-19	Logan-Rogersville													2,211	2,217	2,223	2,252	29	1.3%		
2018-19	OVERALL AVERAGE																			-67	-0.6%
2018-19	OVERALL MEDIAN																			-1	-0.1%

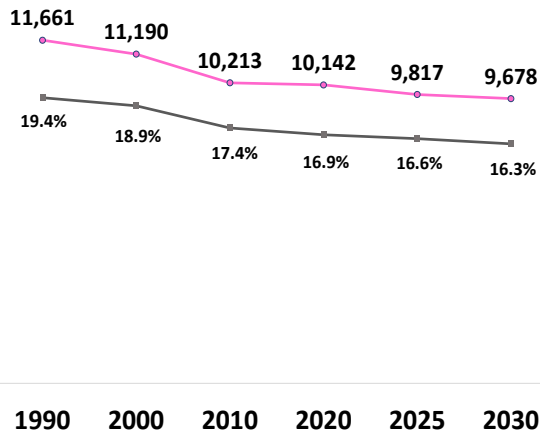
Key Findings

- The 2021-22 enrollment is the lowest in the district in more than 30 years.
- All our projections and demographic data points to nothing but enrollment declines during the next decade.

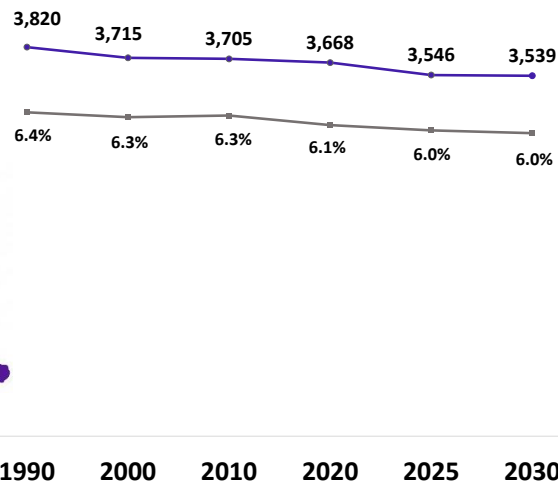
Key Findings

All the key demographic factors are pointing downward

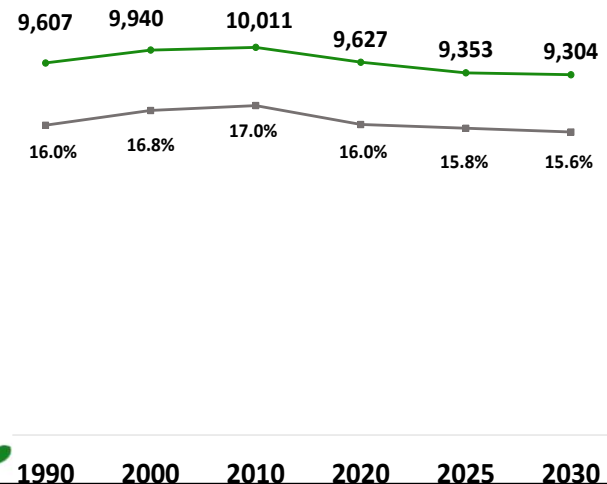
Childbearing Women (18-44 yrs old) Total and Percentage Change



Under 5 Total and Percentage Change

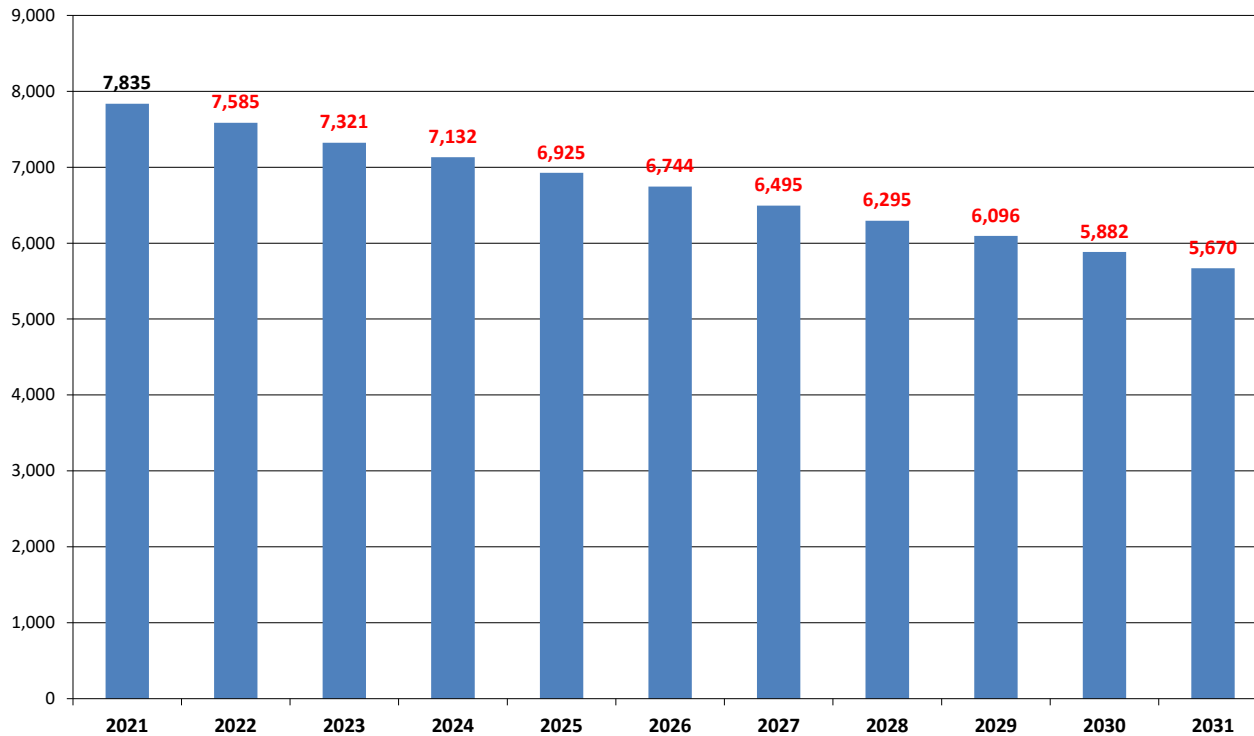


School-Age (5-17 yrs old) Total and Percentage Change



Key Findings

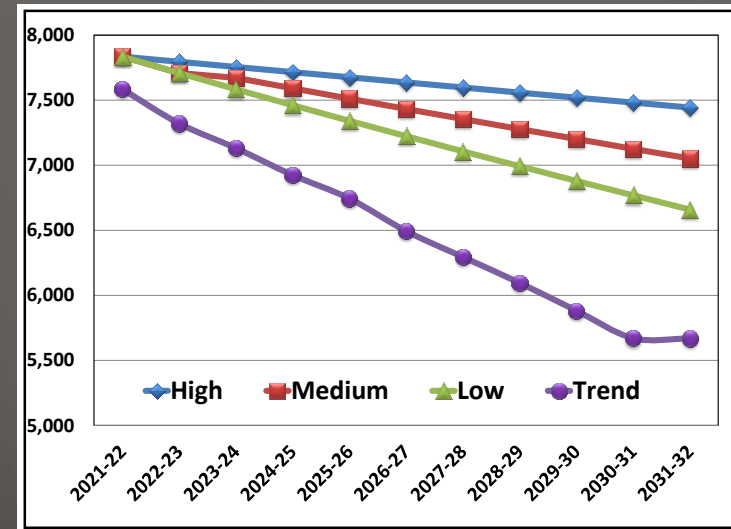
Trend Projection of Raytown School District
(2021-2031)



If the same trend from 2011 to 2021 continues for the next decade, this is what we'd have.

Key Findings

All the projection models point downward.

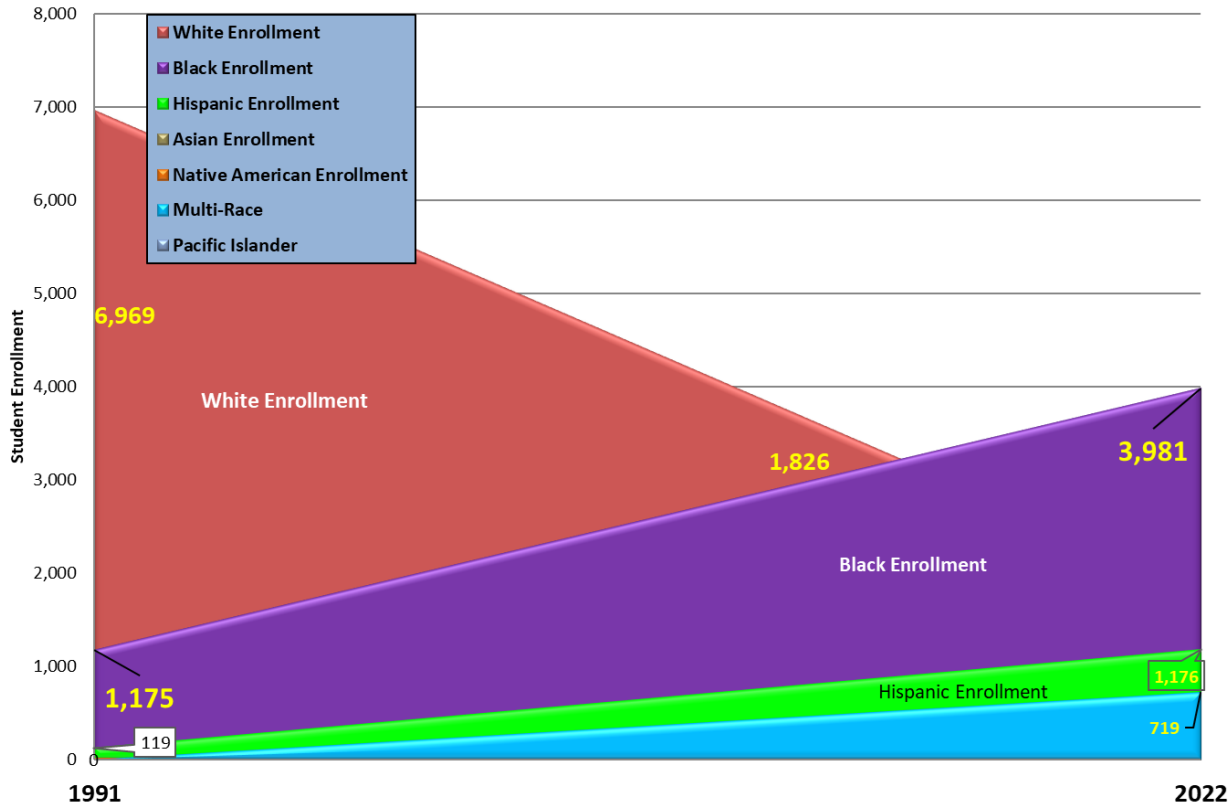


Overall Enrollment Projections, by school, for the Raytown School District (2022-2032)

District	2021-22	2022-23	2023-24	2024-25	2025-26	2026-27	2027-28	2028-29	2029-30	2030-31	2031-32
High	7,835	7,795	7,755	7,715	7,676	7,637	7,598	7,559	7,520	7,482	7,443
Medium	7,835	7,709	7,672	7,591	7,512	7,433	7,355	7,278	7,202	7,126	7,052
Low	7,835	7,709	7,584	7,462	7,342	7,224	7,107	6,992	6,880	6,769	6,660

Key Findings

**Growth of Diverse Enrollment (1991-2022)
in the Raytown School District**



Diversity increased substantially in 30 years even as enrollment has grown little. Has gone from 83% White to 23%

Key Findings

To calculate estimated building capacity, we used an average of four different methods and gathered data during a month's time:

1. gross square footage
2. classroom use
3. number of students per classroom
4. classroom square footage.

Key Findings

We are showing an excess capacity for 3,653 students currently.

School	Grades	2021-22 Current Enrollment	2021-22 Square Footage per Building	Gross Square Footage per Student	Square Footage Per Student Standard	Variance	Square Footage Advantage/ Disadvantage	Estimated Enrollment Capacity	Additional Number of Students Possible
Blue Ridge Elementary	K-5	284	64,240	226	110	116	105.6%	553	269
Eastwood Hills Elementary	K-5	300	47,484	158	110	48	43.9%	510	210
Fletridge Elementary	K-5	308	53,149	173	110	63	56.9%	484	176
Laurel Hills Elementary	K-5	352	53,149	151	110	41	37.3%	508	156
Little Blue Elementary	K-5	386	75,000	194	110	84	76.6%	560	174
Norfleet Elementary	K-5	300	53,856	180	110	70	63.2%	533	233
Robinson Elementary	K-5	341	51,413	151	110	41	37.1%	529	188
Southwood Elementary	K-5	344	51,403	149	110	39	35.8%	521	177
Spring Valley Elementary	K-5	359	53,856	150	110	40	36.4%	572	213
Westridge Elementary	K-5	344	51,482	150	110	40	36.1%	536	192
Raytown Central Middle School	6-8	575	92,371	161	135	26	19.0%	766	191
Raytown Middle School	6-8	726	126,377	174	135	39	28.9%	1,107	381
Raytown South Middle School	6-8	574	102,784	179	135	44	32.6%	1,018	444
Raytown High School	9-12	1,473	233,389	158	160	-2	-1.0%	1,465	-8
Raytown South High School	9-12	1,169	223,220	191	160	31	19.3%	1,826	657
TOTAL		7,835	1,333,173	170				11,488	3,653

Key Findings

Among the elementary schools, we are showing an excess capacity for 1,988 students currently.

School	Grades	2021-22 Current Enrollment	2021-22 Square Footage per Building	Gross Square Footage per Student	Square Footage Per Student Standard	Variance	Square Footage Advantage/ Disadvantage	Estimated Enrollment Capacity	Additional Number of Students Possible
Blue Ridge Elementary	K-5	284	64,240	226	110	116	105.6%	553	269
Eastwood Hills Elementary	K-5	300	47,484	158	110	48	43.9%	510	210
Fleetridge Elementary	K-5	308	53,149	173	110	63	56.9%	484	176
Laurel Hills Elementary	K-5	352	53,149	151	110	41	37.3%	508	156
Little Blue Elementary	K-5	386	75,000	194	110	84	76.6%	560	174
Norfleet Elementary	K-5	300	53,856	180	110	70	63.2%	533	233
Robinson Elementary	K-5	341	51,413	151	110	41	37.1%	529	188
Southwood Elementary	K-5	344	51,403	149	110	39	35.8%	521	177
Spring Valley Elementary	K-5	359	53,856	150	110	40	36.4%	572	213
Westridge Elementary	K-5	344	51,482	150	110	40	36.1%	536	192
TOTAL		3,318	555,032	167				5,306	1,988

Key Findings

Among the middle schools, we are showing an excess capacity for 1,016 students currently.

School	Grades	2021-22 Current Enrollment	2021-22 Square Footage per Building	Gross Square Footage per Student	Square Footage Per Student Standard	Variance	Square Footage Advantage/ Disadvantage	Estimated Enrollment Capacity	Additional Number of Students Possible
Raytown Central Middle School	6-8	575	92,371	161	135	26	19.0%	766	191
Raytown Middle School	6-8	726	126,377	174	135	39	28.9%	1,107	381
Raytown South Middle School	6-8	574	102,784	179	135	44	32.6%	1,018	444
TOTAL		1,875	321,532	171				2,891	1,016

Key Findings

Among the high schools, we are showing an excess capacity for 649 students currently.

School	Grades	2021-22 Current Enrollment	2021-22 Square Footage per Building	Gross Square Footage per Student	Square Footage Per Student Standard	Variance	Square Footage Advantage/ Disadvantage	Estimated Enrollment Capacity	Additional Number of Students Possible
Raytown High School	9-12	1,473	233,389	158	160	-2	-1.0%	1,465	-8
Raytown South High School	9-12	1,169	223,220	191	160	31	19.3%	1,826	657
TOTAL		2,642	456,609	173				3,291	649

Key Findings

By 2026, there could be an excess capacity for 3,851 students.

School	Grades	2026-27 Projected Enrollment	2021-22 Square Footage per Building	Gross Square Footage per Student	Square Footage Per Student Standard	Variance	Square Footage Advantage/ Disadvantage	Estimated Enrollment Capacity	Additional Number of Students Possible
Blue Ridge Elementary	K-5	366	64,240	176	110	66	59.6%	553	187
Eastwood Hills Elementary	K-5	289	47,484	164	110	54	49.4%	510	221
Fleetridge Elementary	K-5	288	53,149	185	110	75	67.8%	484	196
Laurel Hills Elementary	K-5	357	53,149	149	110	39	35.3%	508	151
Little Blue Elementary	K-5	418	75,000	179	110	69	63.1%	560	142
Norfleet Elementary	K-5	258	53,856	209	110	99	89.8%	533	275
Robinson Elementary	K-5	349	51,413	147	110	37	33.9%	529	180
Southwood Elementary	K-5	328	51,403	157	110	47	42.5%	521	193
Spring Valley Elementary	K-5	350	53,856	154	110	44	39.9%	572	222
Westridge Elementary	K-5	352	51,482	146	110	36	33.0%	536	184
Raytown Central Middle School	6-8	506	92,371	183	135	48	35.2%	766	260
Raytown Middle School	6-8	679	126,377	186	135	51	37.9%	1,107	428
Raytown South Middle School	6-8	499	102,784	206	135	71	52.6%	1,018	519
Raytown High School	9-12	1,455	233,389	160	160	0	0.3%	1,465	10
Raytown South High School	9-12	1,143	223,220	195	160	35	22.1%	1,826	683
TOTAL		7,637	1,333,173	175				11,488	3,851

Key Findings

By 2031, there could be an excess capacity for 4,044 students.

School	Grades	2031-32 Projected Enrollment	2031-32 Square Footage per Building	Gross Square Footage per Student	Square Footage Per Student Standard	Variance	Square Footage Advantage/ Disadvantage	Estimated Enrollment Capacity	Additional Number of Students Possible
Blue Ridge Elementary	K-5	371	64,240	173	110	63	57.4%	553	182
Eastwood Hills Elementary	K-5	295	47,484	161	110	51	46.3%	510	215
Fleetridge Elementary	K-5	298	53,149	178	110	68	62.1%	484	186
Laurel Hills Elementary	K-5	360	53,149	148	110	38	34.2%	508	148
Little Blue Elementary	K-5	418	75,000	179	110	69	63.1%	560	142
Norfleet Elementary	K-5	270	53,856	199	110	89	81.3%	533	263
Robinson Elementary	K-5	354	51,413	145	110	35	32.0%	529	175
Southwood Elementary	K-5	332	51,403	155	110	45	40.8%	521	189
Spring Valley Elementary	K-5	349	53,856	154	110	44	40.3%	572	223
Westridge Elementary	K-5	363	51,482	142	110	32	28.9%	536	173
Raytown Central Middle School	6-8	510	92,371	181	135	46	34.2%	766	256
Raytown Middle School	6-8	685	126,377	184	135	49	36.7%	1,107	422
Raytown South Middle School	6-8	503	102,784	204	135	69	51.4%	1,018	515
Raytown High School	9-12	1,308	233,389	178	160	18	11.5%	1,465	157
Raytown South High School	9-12	1,028	223,220	217	160	57	35.7%	1,826	798
TOTAL		7,444	1,333,173	179				11,488	4,044

Key Findings

By 2031, among the elementary schools, we are showing an excess capacity for 1,896 students.

School	Grades	2031-32 Projected Enrollment	2031-32 Square Footage per Building	Gross Square Footage per Student	Square Footage Per Student Standard	Variance	Square Footage Advantage/ Disadvantage	Estimated Enrollment Capacity	Additional Number of Students Possible
Blue Ridge Elementary	K-5	371	64,240	173	110	63	57.4%	553	182
Eastwood Hills Elementary	K-5	295	47,484	161	110	51	46.3%	510	215
Fleetridge Elementary	K-5	298	53,149	178	110	68	62.1%	484	186
Laurel Hills Elementary	K-5	360	53,149	148	110	38	34.2%	508	148
Little Blue Elementary	K-5	418	75,000	179	110	69	63.1%	560	142
Norfleet Elementary	K-5	270	53,856	199	110	89	81.3%	533	263
Robinson Elementary	K-5	354	51,413	145	110	35	32.0%	529	175
Southwood Elementary	K-5	332	51,403	155	110	45	40.8%	521	189
Spring Valley Elementary	K-5	349	53,856	154	110	44	40.3%	572	223
Westridge Elementary	K-5	363	51,482	142	110	32	28.9%	536	173
TOTAL		3,410	555,032	163				5,306	1,896

Key Findings

By 2031, among the middle schools, we are showing an excess capacity for 1,193 students.

School	Grades	2031-32 Projected Enrollment	2031-32 Square Footage per Building	Gross Square Footage per Student	Square Footage Per Student Standard	Variance	Square Footage Advantage/ Disadvantage	Estimated Enrollment Capacity	Additional Number of Students Possible
Raytown Central Middle School	6-8	510	92,371	181	135	46	34.2%	766	256
Raytown Middle School	6-8	685	126,377	184	135	49	36.7%	1,107	422
Raytown South Middle School	6-8	503	102,784	204	135	69	51.4%	1,018	515
TOTAL		1,698	321,532	189				2,891	1,193

Key Findings

By 2031, among the high schools, we are showing an excess capacity for 955 students.

School	Grades	2031-32 Projected Enrollment	2031-32 Square Footage per Building	Gross Square Footage per Student	Square Footage Per Student Standard	Variance	Square Footage Advantage/ Disadvantage	Estimated Enrollment Capacity	Additional Number of Students Possible
Raytown High School	9-12	1,308	233,389	178	160	18	11.5%	1,465	157
Raytown South High School	9-12	1,028	223,220	217	160	57	35.7%	1,826	798
TOTAL		2,336	456,609	195				3,291	955

Recommendations

Close 5 Elementary Buildings by 2031

The average enrollment at the elementary schools by 2031 will be 341 students and the total excess capacity will be 1,896 students. That would be 5.5 schools of excess capacity.

Recommendations

Close 2 Middle Schools by 2031

The average enrollment at the **middle schools** by 2031 will be 566 students and the total excess capacity will be 1,193 students. That would be 2.1 schools of excess capacity.

Recommendations

Close 1 High School By 2031

The average enrollment at the **high schools** by 2031 will be 2,336 students and the total excess capacity will be 955 students. That would be 1 school of excess capacity.

Recommendations

In Conclusion

We recommend that during the next decade, the following schools be closed:

- **5 elementary schools**
- **2 middle schools**
- **1 high school**



Business Information Services
L L C